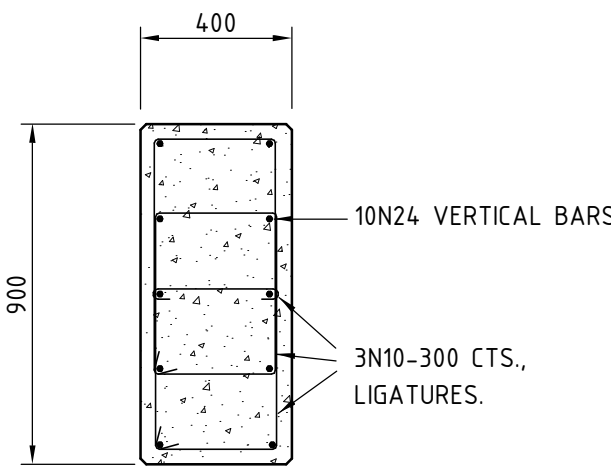
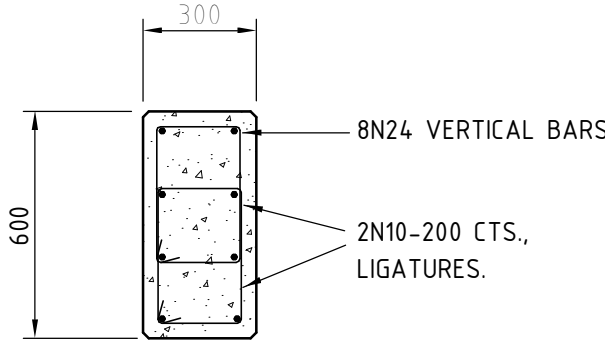


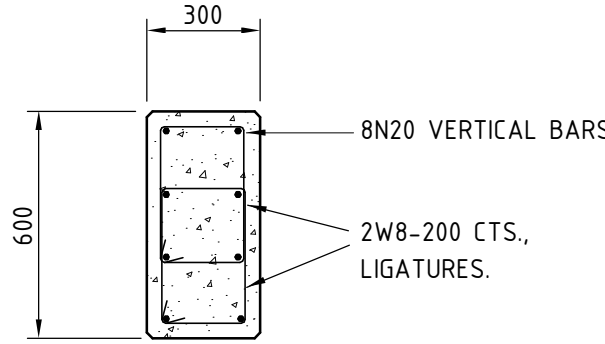
SECTION 01
SCALE 1:20
(SHOWING SECTION THROUGH MIDDLE PORTION OF TYPE-A COLUMN)



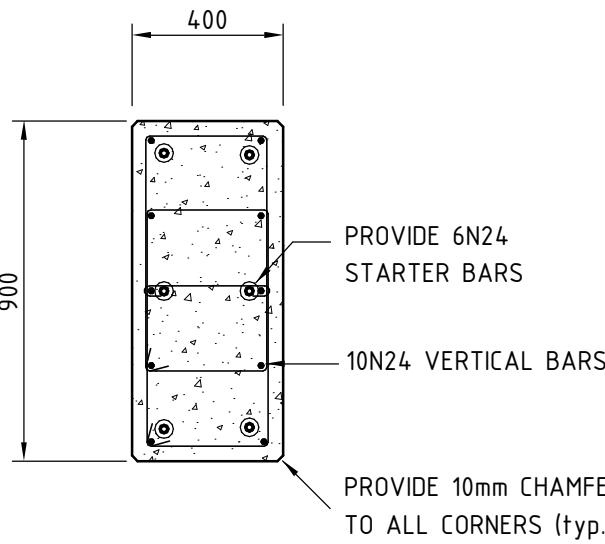
TYPICAL SECTION THROUGH MIDDLE PORTION OF TYPE-B COLUMN
SCALE 1:20



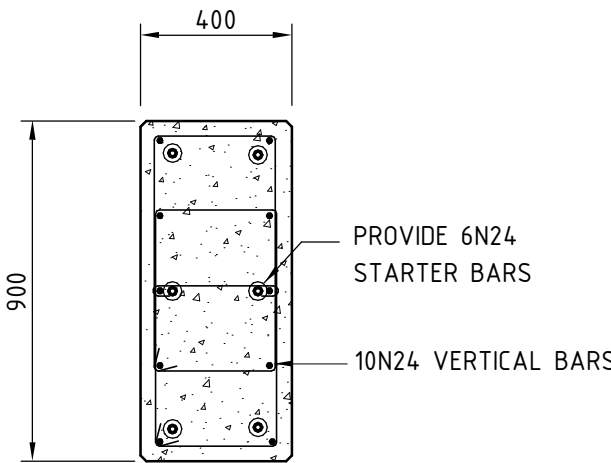
TYPICAL SECTION THROUGH MIDDLE PORTION OF TYPE-C COLUMN
SCALE 1:20



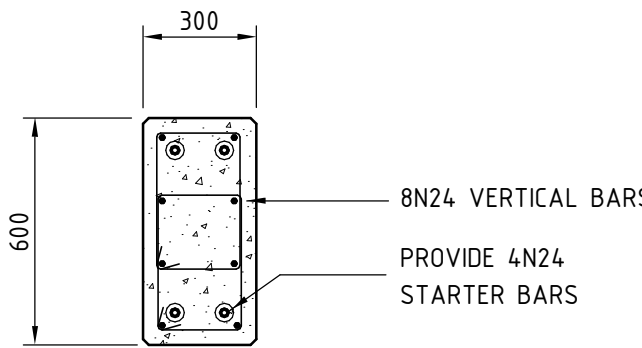
TYPICAL SECTION THROUGH MIDDLE PORTION OF TYPE-D COLUMN
SCALE 1:20



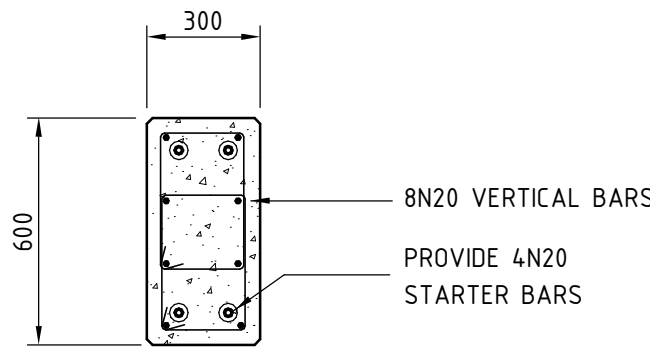
SECTION 02
SCALE 1:20
(SHOWING TYPICAL DETAIL AT BASE OF TYPE-A COLUMN)



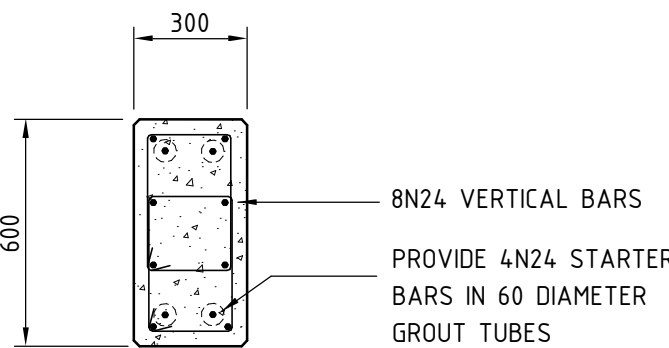
TYPICAL DETAIL AT BASE OF TYPE-B COLUMN
SCALE 1:20



TYPICAL DETAIL AT BASE OF TYPE-C COLUMN
SCALE 1:20



TYPICAL DETAIL AT BASE OF TYPE-D COLUMN
SCALE 1:20



SECTION 03
SCALE 1:20
(SHOWING TYPICAL DETAIL AT BASE OF PRECAST TYPE-C COLUMN)

CONCRETE COLUMN SCHEDULE

	MARK	LEVEL									
		BC1	BC2	BC3	GC1	GC2	1C1	1C2	1C3	2C1	2C2
40 MPa	THIRD FLOOR LEVEL										
	COLUMN TYPE (CONCRETE) REINFORCEMENT									TYPE-C 8N24 (PRECAST)	TYPE-D 8N20 (PRECAST)
	SECOND FLOOR LEVEL										
	COLUMN TYPE (CONCRETE) REINFORCEMENT						TYPE-A 10N24	TYPE-C 8N24 (PRECAST)	TYPE-D 8N20 (PRECAST)		
	FIRST FLOOR LEVEL										
	COLUMN TYPE (CONCRETE) REINFORCEMENT				TYPE-A 10N24	TYPE-C 8N24					
40 MPa	GROUND FLOOR LEVEL										
	COLUMN TYPE (CONCRETE) REINFORCEMENT	TYPE-A 10N24	TYPE-B 10N20	TYPE-C 8N24							
	BASEMENT FLOOR LEVEL										
	TOP OF FOOTING	6N20 STARTERS	6N20 STARTERS	6N20 STARTERS							

NOTE:
HATCHING DENOTES PRECAST CONCRETE COLUMN. FOR DETAILS, REFER TO ADJACENT SECTIONS.

TENDER ISSUE

02.07.19		ISSUED FOR TENDER	
Date	Revision	Issue	
PT Design			
PT Design Associates Pty Ltd 141-149 Ifould St Adelaide SA 5000 T [08 8412 4300] F [08 8232 4311] E [ptdesign@ptdesign.net.au]			
Designer	RW	Drawn	82 & MM
Approved	Approver	Date	02/07/2019 1:02:47 PM
			Sheet
Project			
HYDE PARK PLACE 248 UNLEY ROAD, HYDE PARK SA			
Client			N +
CITYFY & BFC PTY LTD			
Drawing Title			Scale As indicated
CONCRETE COLUMN SCHEDULE & DETAILS			
Drawing Number			Issue
20492-S31			T